



1,022sqm Warehouse, Showroom and Office in Prime Location

2/24 Newheath Drive Arundel QLD 4214

For Lease

- For Lease | 1,022sqm* multi-purpose property
- 802sqm* of warehouse incl. 83sqm* mezzanine level
- 220sqm* of modern showroom and corporate office space
- 310sqm* of hardstand at front incl. 8 allocated parking bays
- High clearance automatic roller door
- Quality full size kitchen/staff lunchroom
- Male/female bathrooms plus disabled amenities
- Solar power system
- Automatic security gate
- Direct truck access from road
- Plenty of room for shipping container set down
- Just minutes from the M1 Motorway
- The complete industrial package in a strategic location
- Phone for inspection today

PRICE GUIDE: Contact Agent

Property ID:	1P8149
Suburb:	Arundel
Property Type:	Industrial
Building Size:	1022 sqm
Car Space:	8



Gannon Hempel

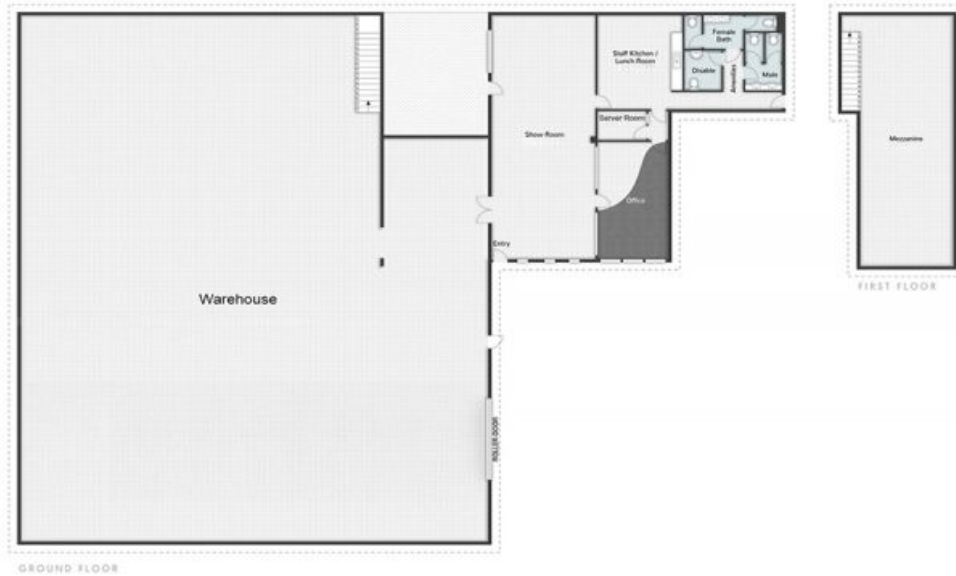
0416 364 844



10/61 Cuthbert Drive, Yatala QLD 4207

www.corwells.com.au

07 3056 0588



2/24 Newheath Drive ARUNDEL

All dimensions are approximate, they are subject to errors and inaccuracies and no liability will be accepted. Plans are shown for marketing purposes only.

